

II B. Tech II Semester Supplementary Examinations, Nov/Dec-2016
BUILDING PLANNING AND DRAWING
(Civil Engineering)

Time: 3 hours

Max. Marks: 70

Note: 1. Question Paper consists of two parts (**Part-A** and **Part-B**)
2. Answer any **Three** questions in **PART-A**
3. Answer **One** question from **PART-B**

~~~~~

**PART-A**

(14 × 3 = 42M)

1. a) What are the objectives of building bylaws  
b) Write briefly about Open Space Requirements of buildings.
  
2. a) List out different purposes of rooms in a residential building?  
b) Explain the standard requirements of the following in a residential building.
  - i) Bed Room
  - ii) Drawing cum Dining Room
  
3. a) Write the importance and necessity in planning of industrial buildings?  
b) Write the importance and necessity in planning of hotels and motels
  
4. Explain CPM and PERT network plan?
  
5. a) Write the importance and necessity in planning of buildings for recreation.  
b) Explain the importance of height of buildings according to building bye-laws?



**PART-B**

(Answer any ONE question on drawing sheet)

(1 × 28 = 28M)

6. Draw the King Post Truss of 6.00 m clear span with all required elements like Purlins, rafters and battens. The cross sectional details are as follows.
- King post: 10cm × 10cm - 1.8 m Height
  - Principal Rafter: 12cm × 10cm - 3.5m long
  - Common Rafter: 10cm × 6cm - 80cm spacing
  - Eave Board: 10cm × 8cm
  - Cleats: 8cm × 8cm - 15cm long
  - Purlins: 12cm × 8cm
  - Battens: 4cm × 4cm
- Assume cross section of any other connection elements if required.
7. Draw the plan and sectional elevation along AB for the LINE diagram given below (Figure 2). Assume suitable Foundation details.

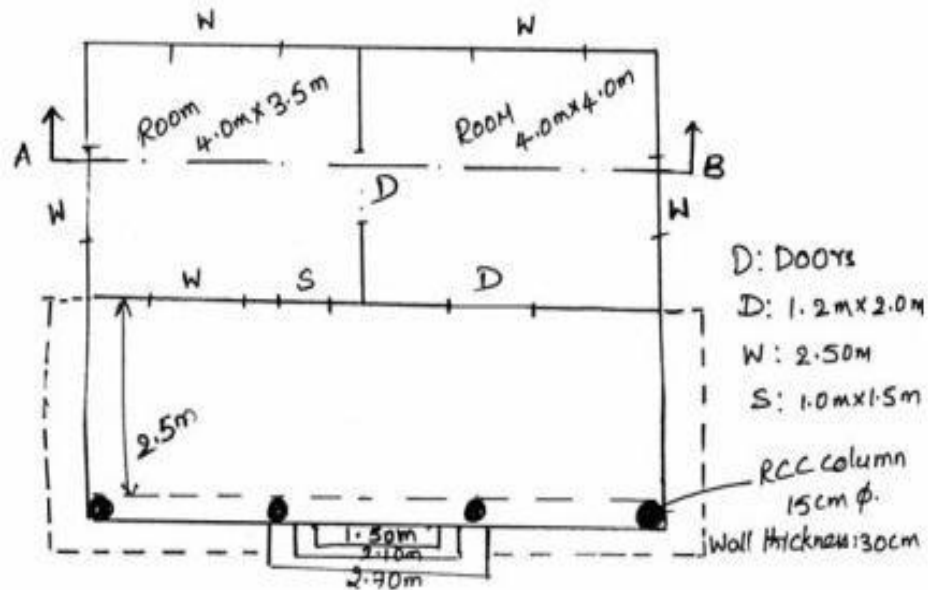


Figure 2

\*\*\*\*\*

